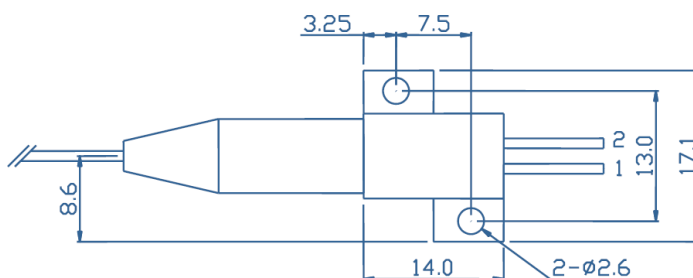
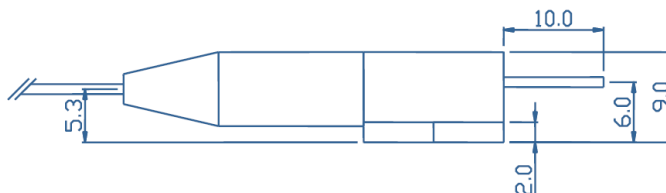
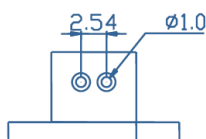


Model		M915±10-10-F105/22-R2		
Optical	Unit	Min	Typical	Max
Output Power (exit fiber)	W		10	
Central Wavelength	nm	905	915	925
Spectral Width (FWHM)	nm		6	10
Wavelength Temp. Coefficient	nm/°C		0.35	
Fiber Pigtail				
Core Diameter	μm	102	105	108
Cladding Diameter	μm	122	125	128
Coating Diameter	μm		250	
Numerical Aperture		0.20	0.22	0.24
Length	m	1.5	2	
Electric				
Threshold Current	A		0.6	
Operating Current	A		11.4	12
Operating Voltage	V		1.7	1.9
Slope Efficiency	W/A		1.0	
Power Conversion Efficiency	%		50	
Back Reflection Protection				
Wavelength Rrange	nm		1030 – 1100	
Attenuation	dB		>40	
Absolute Ratings				
Operating (Housing) Temperature	°C		20 – 30	
Operating Humidity	%		< 75	
Storage Temperature	°C		-20 – +80	
Soldering Temperature	°C		250 (10s)	



1	Laser diode anode
2	Laser diode cathode

Compliance with Regulatory Requirements: This industrial laser is an OEM version of a laser diode. As such, it is intended only for integration into other equipment. This laser does not comply with IEC and CDRH requirements. The customer is responsible for IEC and CDRH certifications of the system that incorporates this industrial laser.

