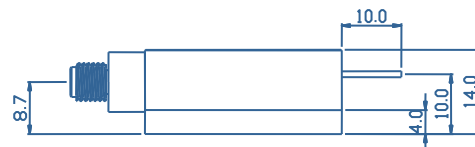
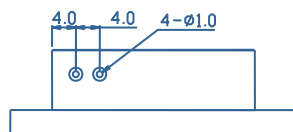
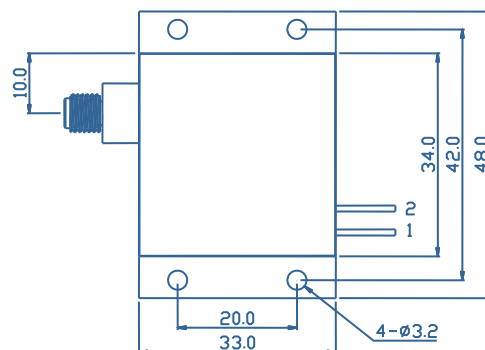


| Model                             |       | M878.6±0.5-40-D200/22-T4M |           |       |
|-----------------------------------|-------|---------------------------|-----------|-------|
| Optical                           | Unit  | Min                       | Typical   | Max   |
| Output Power                      | W     |                           | 40        |       |
| Central Wavelength                | nm    | 878.1                     | 878.6     | 879.1 |
| Spectral Width (FWHM)             | nm    |                           | 0.5       |       |
| Wavelength Temp. Coefficient      | nm/°C |                           | 0.02      |       |
| Wavelength Current Coefficient    | nm/A  |                           | 0.05      |       |
| Fiber Receptacle                  |       |                           |           |       |
| Fiber Core Diameter               | µm    |                           | 200       |       |
| Numerical Aperture                | -     |                           | 0.22      |       |
| Fiber connector                   | -     |                           | SMA905    |       |
| Electric                          |       |                           |           |       |
| Threshold Current                 | A     |                           | 1.4       |       |
| Operating Current                 | A     |                           | 12.0      | 12.5  |
| Operating Voltage                 | V     |                           | 7.19      | 7.25  |
| Slope Efficiency                  | W/A   |                           | 3.8       |       |
| Power Conversion Efficiency       | %     | 45                        |           |       |
| Absolute Ratings                  |       |                           |           |       |
| Operating Temperature (baseplate) | °C    |                           | 20 – 30   |       |
| Operating Humidity                | %     |                           | < 75      |       |
| Storage Temperature               | °C    |                           | -20 – +80 |       |



|   |                     |
|---|---------------------|
| 1 | Laser Diode Anode   |
| 2 | Laser Diode Cathode |



**Compliance with Regulatory Requirements:** This industrial laser is an OEM version of a laser diode. As such, it is intended only for integration into other equipment. This laser does not comply with IEC and CDRH requirements. The customer is responsible for IEC and CDRH certifications of the system that incorporates this industrial laser.

